



⋮ **ATD Series**

AIR TOOL DRYER



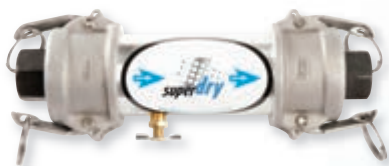
Replacement kit for ATD-1/2 - CL

WARNING

Risk of injury. Release all air pressure from system before servicing

⋮ **HOW TO INSTALL A NEW REPLACEMENT KIT**

- Open the camlock caps.
- Remove everything from the dryer but keep the grids. Leave the gaskets in the caps.
- Insert parts in the order shown on the other page.
- Open air supply **SLOWLY**. Check caps for air leakage. If leakage occurs, shut off air supply, relieve pressure from unit by manually activating the drain cock on the ATD. Make sure that the gaskets and covers are installed properly.



EATD-CL (P/N: 290.122)

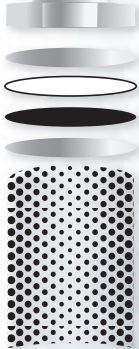
REPLACEMENT KIT INCLUDES

Desiccant Bag x 1

Felt Pad x 2

Paper Filter x 2

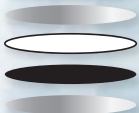
INSTALLATION



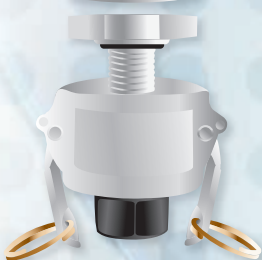
- ← Stainless steel grid
- ← Paper filter
- ← Felt
- ← Stainless steel grid
- ← Desiccant bag



- ← Drain cock



- ← Stainless steel grid
- ← Paper filter
- ← Felt
- ← Stainless steel grid



2104 Francis-Hughes, Laval (Qc) Canada H7S 1N7
Tel.: 1-888-828-1122 | Fax: 1-888-828-1133
info@super-dry.com
www.super-dry.com